



# Maximize Energy Storage Revenue with Connected Solutions and Clean Peak Standard

*April 2, 2025*



# WEBINAR AGENDA

Intro to ConnectedSolutions & Clean Peak Standard

How to Model CS & CPS Savings in ETB Developer

Earning Clean Peak Energy Credits (CPECs)

How ETB Controller Automates Program Participation

Strategies to Maximize Participation & Savings

Streamlining Program Process

Q&A

Check List

# Speakers

---



**Tracy Fosterling**

Marketing  
Manager



**Nathan Gutzmann**

Product Manager  
ETB Controller



**Bailey Cox**

Regional Account  
Manager

# Introduction to ConnectedSolutions & Clean Peak Standard

## ConnectedSolutions

June through September program period

30-60 events per season

\$200/kW in Massachusetts  
\$275/kW in Rhode Island

**Goal:** Reduce load on the grid during peak hours and improving grid stability

VS

## Clean Peak Standard (CPS)

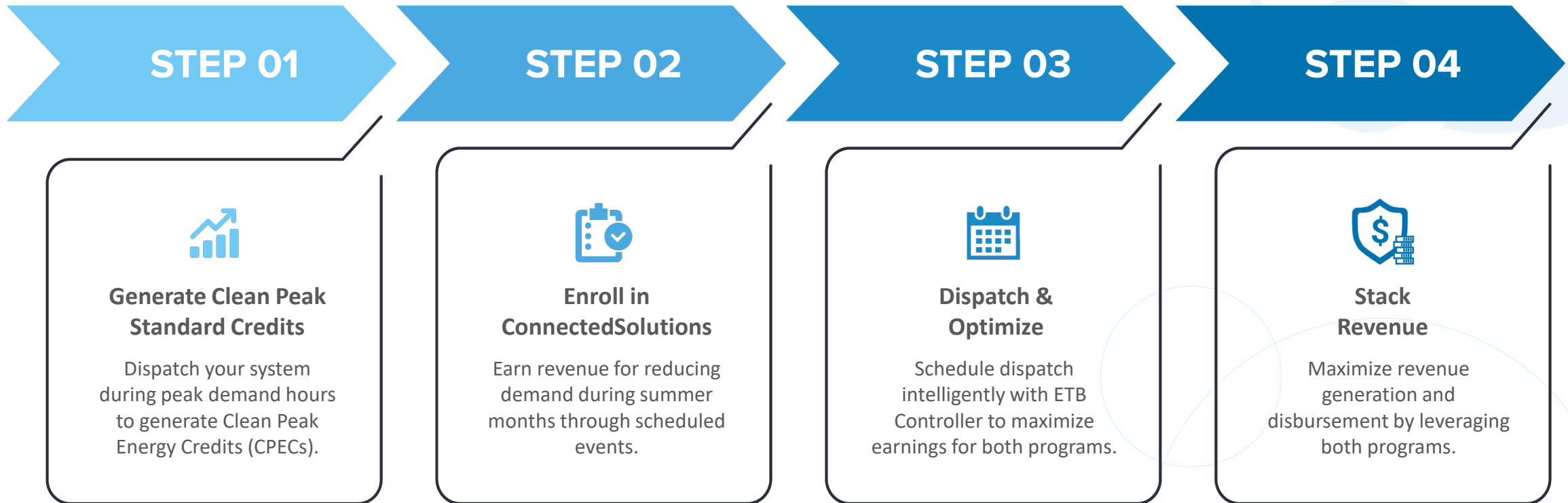
Front and behind-the-meter projects

Achieve compliance via Clean Peak Energy Credits

1MWh of renewable energy equates to one Clean Peak Energy Credit (CPEC)

**Goal:** Increase the amount of renewable energy generated in Massachusetts

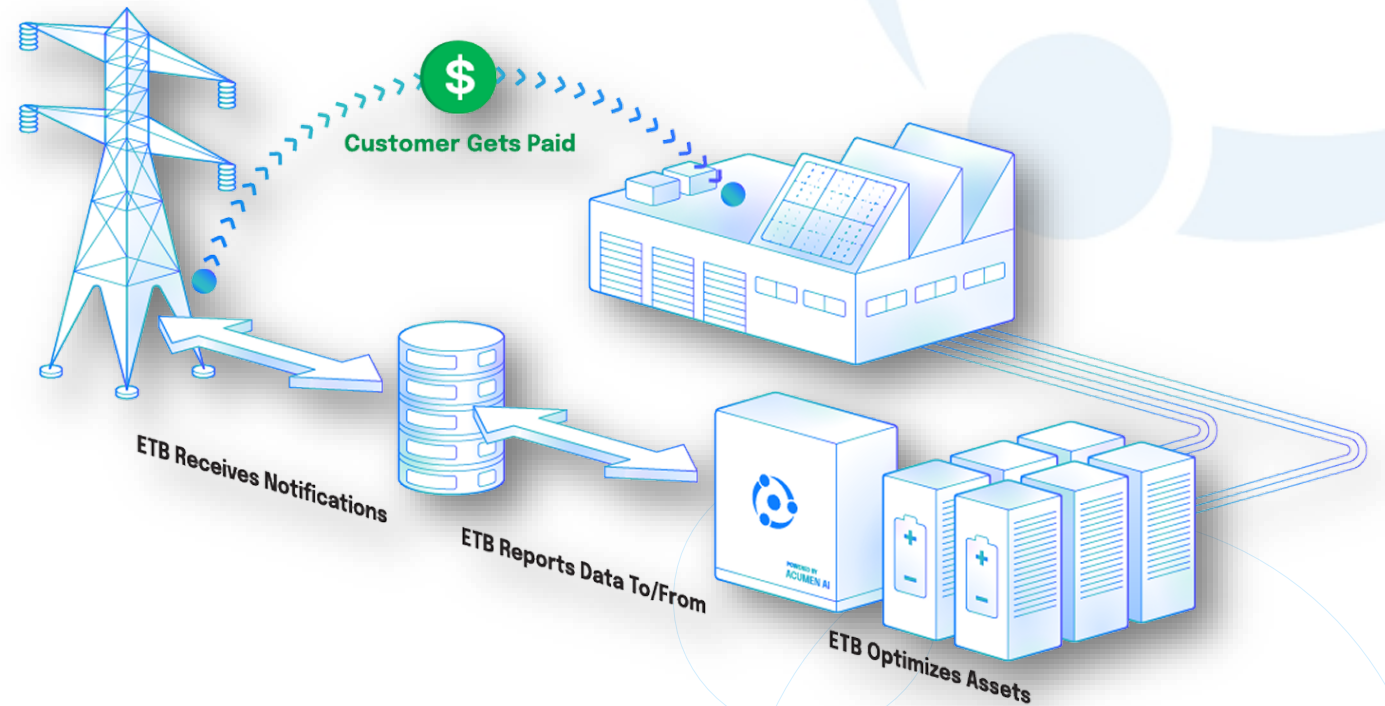
# Stacking Programs for Optimal Savings



# How Does ConnectedSolutions Work?

## Program Details

- Massachusetts & Rhode Island
- Includes the major utilities: Eversource, National Grid, Unitil & Rhode Island Energy
- Incentives to reduce peak demand for commercial & industrial (C&I) customers



# Lucrative Incentives & Lock-In Rates for C&I Customers

Targeted Dispatch	VS	Daily Dispatch (recommended)
2-8 events per season		30-60 events per season
\$35/kW compensation		\$200/kW for Massachusetts or \$275/kW in Rhode Island
<b>Example Revenue:</b> Earn as high as ~\$15,000 per year on average		<b>Example Revenue:</b> Earn up to ~\$87,000/year in Massachusetts or ~\$120,000/year in Rhode Island

*\*Note: Example revenue based on a 500kW/1MWh battery with an average event duration of 2.3 hours*

## Lock-In Rates

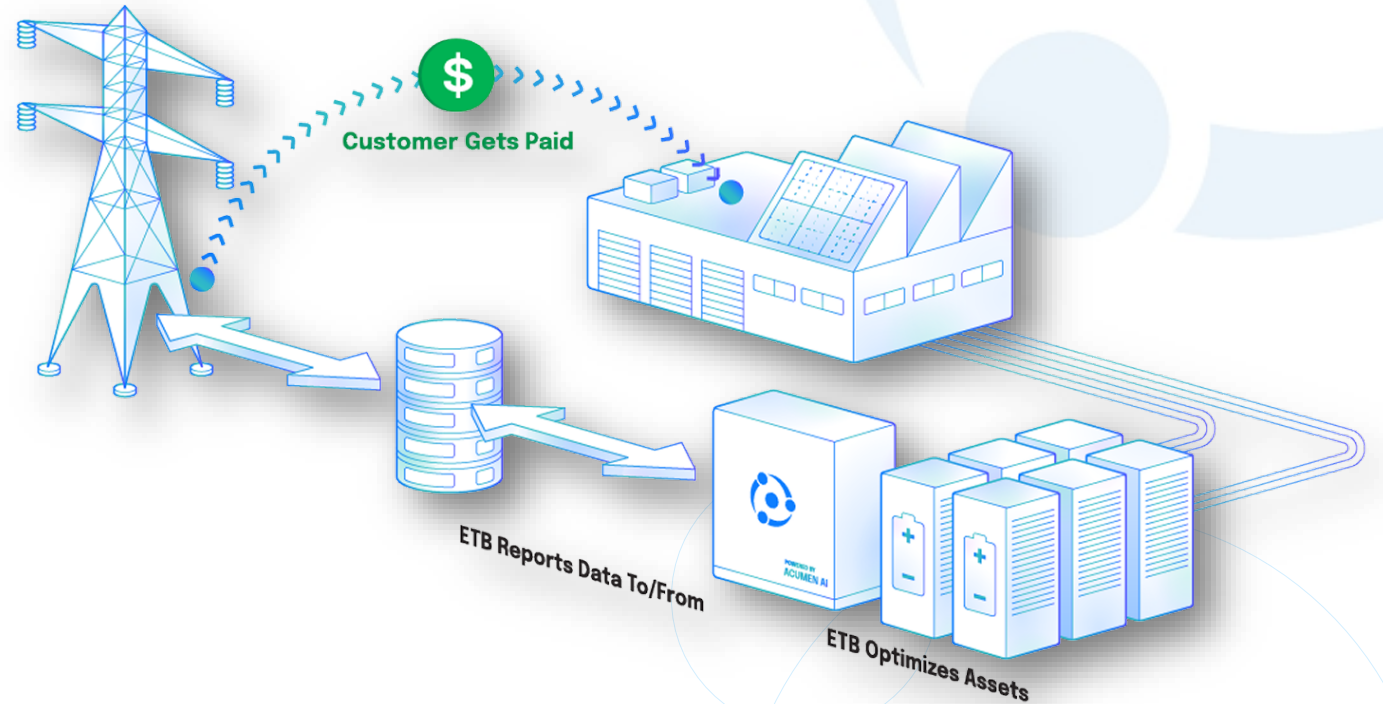
Projects can lock in the incentive rate prior to installation for up to 2 years. Once participation starts, customers can lock in the incentive rate for 5 years.



# How Does Clean Peak Standard Work?

## Program Details

- Solar, solar + storage, storage-only sites in Massachusetts
- 1 CPEC = 1 MWh of renewable energy generation
- Multipliers adjust CPEC totals based on season, site, and grid load
- Summer/Winter participation applies a **4x multiplier**
- Energy dispatched during the monthly peak earns a **25x multiplier**
- Monthly peak energy in summer: **4 x 25 = 100x multiplier**





# Navigating ACP & CPECs for Clean Peak Standard

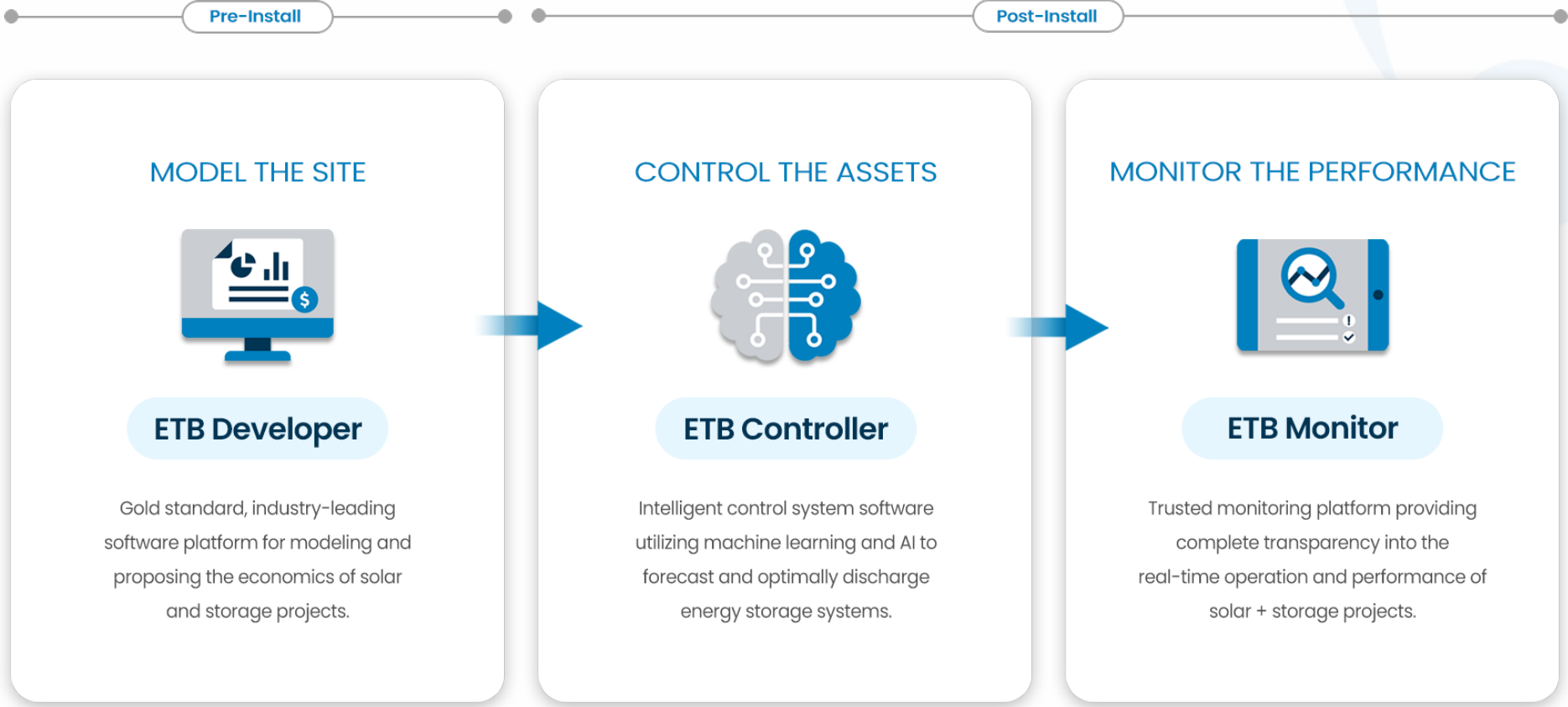
- Renewable energy generation targets increase yearly.
- Facilities failing to meet targets must pay the Alternative Compliance Payment (ACP)
- **ACP Rates**
  - \$65/MWh for 7 years, then \$45/MWh.
- Instead of ACP, generators can buy CPECs, with ACP setting a price ceiling
- ACP rates are set through 2050, ensuring long-term program value



# Steps to Enroll & Participate



# From Project Conception Through End of Life



# Utility Rates & Net Metering

## Customer Charges

- Flat Rate
- Tiered By Max Annual Demand
- Tiered By Max Annual Energy Use
- Tiered By Max Monthly Demand
- Tiered By Max Monthly Energy Use
- Flat Rate: Charges Vary With Units

## Energy Charges

- Flat Rate
- TOU
- Tiered
- Tiered: Tier Ceilings Vary with Demand
- TOU With Nested Tiers
- Tiered: Tier Ceilings Vary With Units
- TOU With Nested Proportional Tiers
- Demand Tiers With Energy SubTiers
- Daily/Hourly Pricing

## Demand Charges

- Flat Rate
- Tiered
- TOU With Nested Tiers
- TOU

Billing demand ?  
**Ratchet Configuration**  
**Minimum Demand Values**

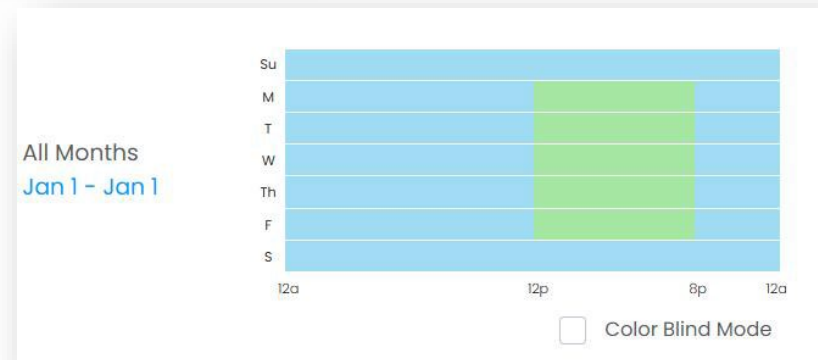
## Metering Details

### Metering Details

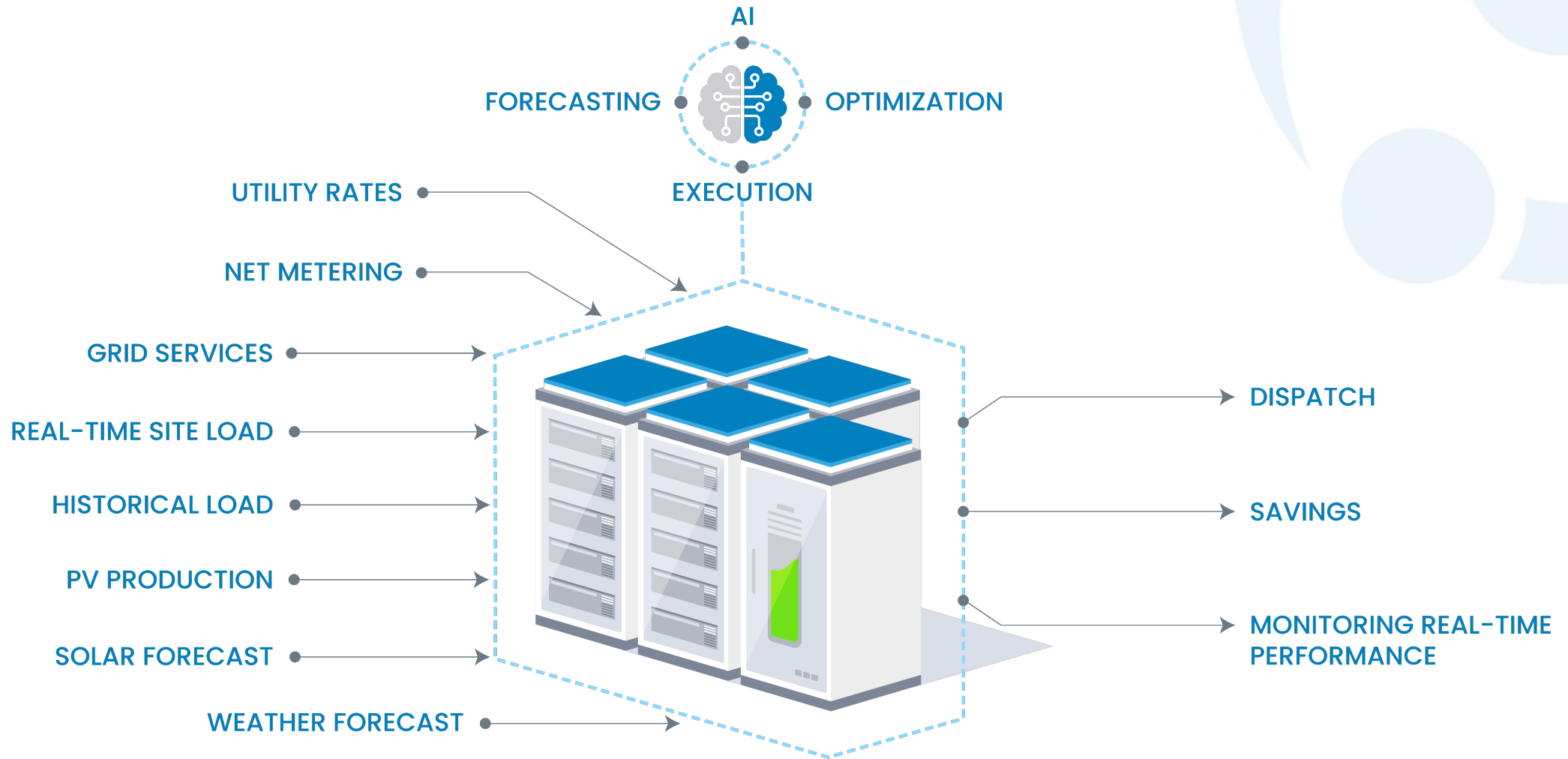
- \* Metering Type
  - Full Retail Net Metering
  - Net Billing with user defined NBC's
  - Net Billing with user defined fixed rate for Exports
  - Net Billing with Rate Schedule defined Imports/Exports/NBC's

### True-up Details

- \* True-Up Period ?
  - Annual
  - Billing Period
- \* Utility Billing Frequency
  - Annual
  - Billing Period
- \* Compensation at the end of the true-up
  - Full Credit
  - Wholesale Energy Rate for Any Net Energy Exported
  - No Compensation for Outstanding Credits
- \* Wholesale Energy Rate ? 0.05 \$ / kWh

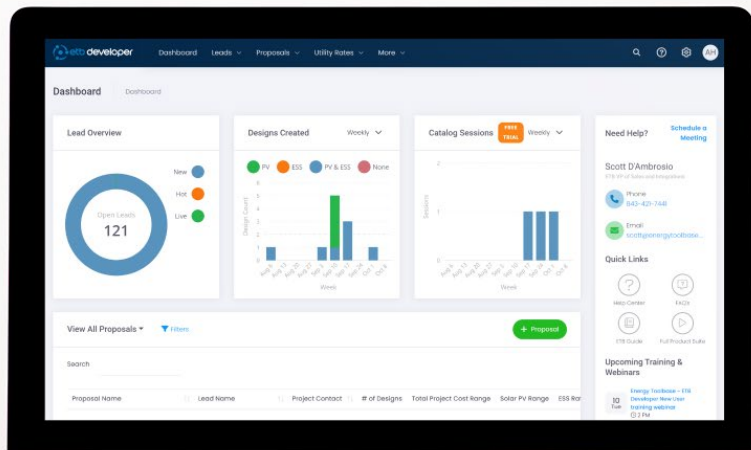


# What Does ETB Controller Do?





Q & A



THANK  
YOU!

## CONTACT INFORMATION



(866) 303-7786



customer@energytoolbase.com



www.energytoolbase.com